

Figure 1--Greece: population (1000 persons)

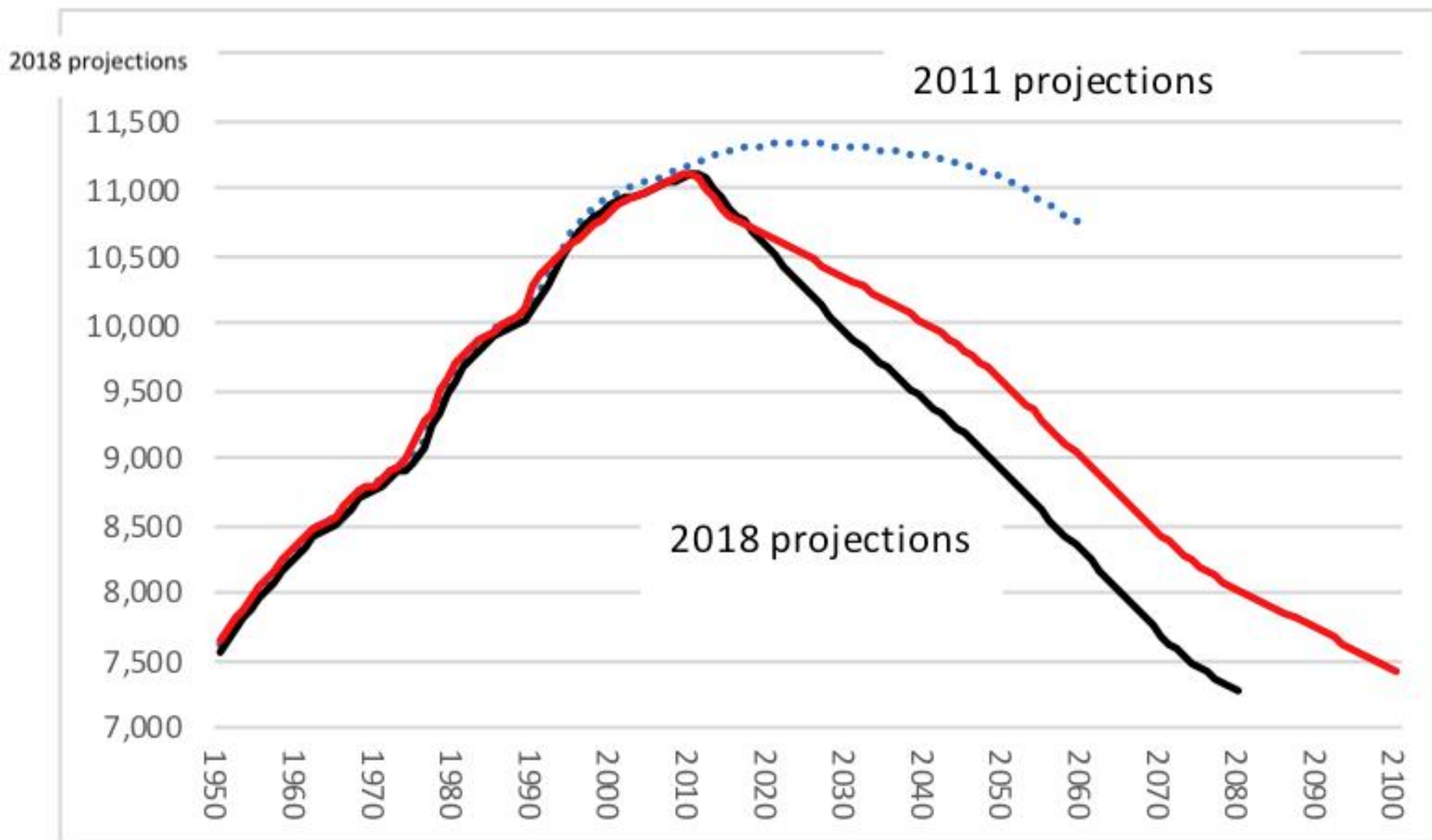


Figure 2--Greece: working-age population (15-64 years; 1000 persons)

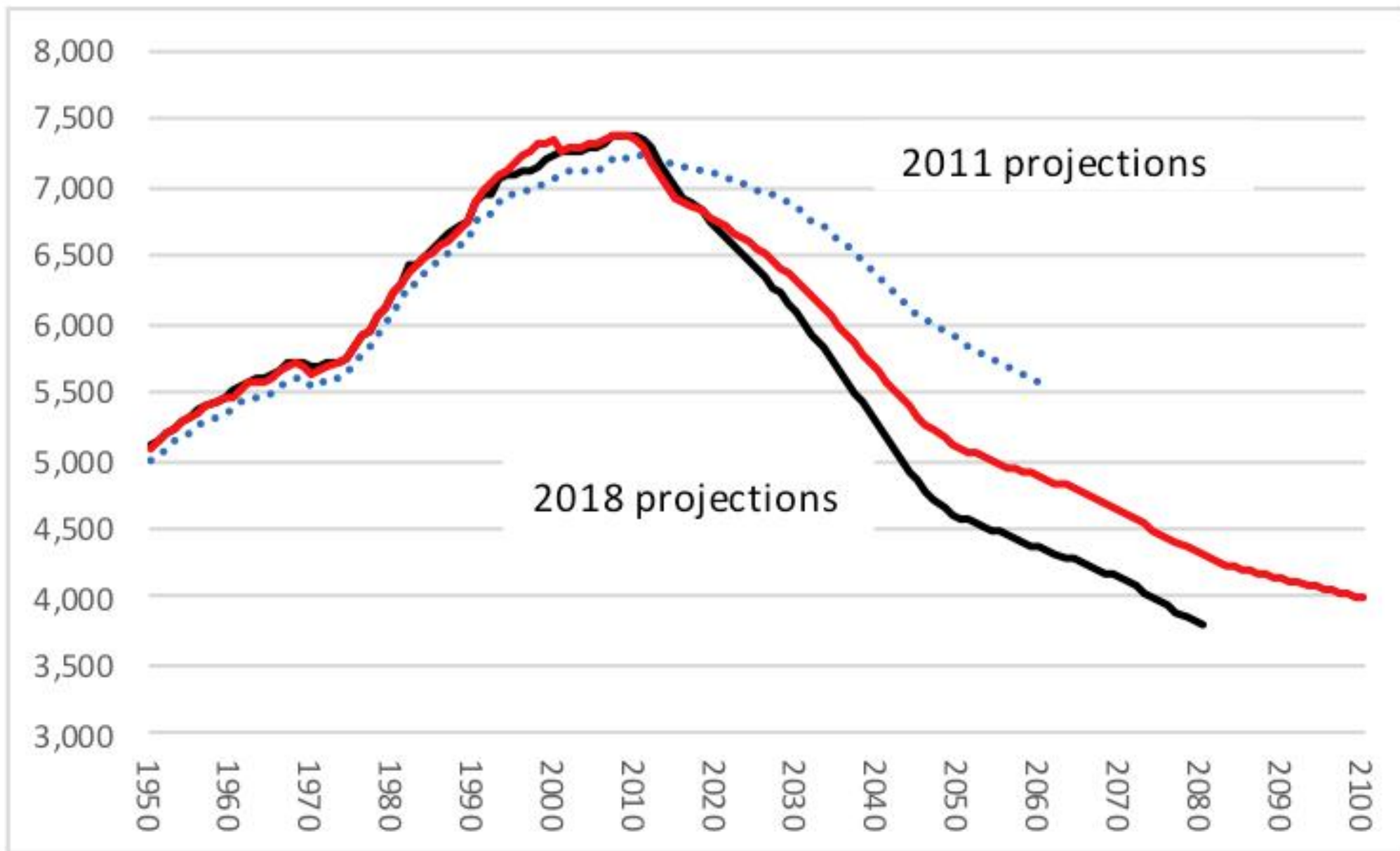


Figure 9--Greece: Potential Output Growth (percent)

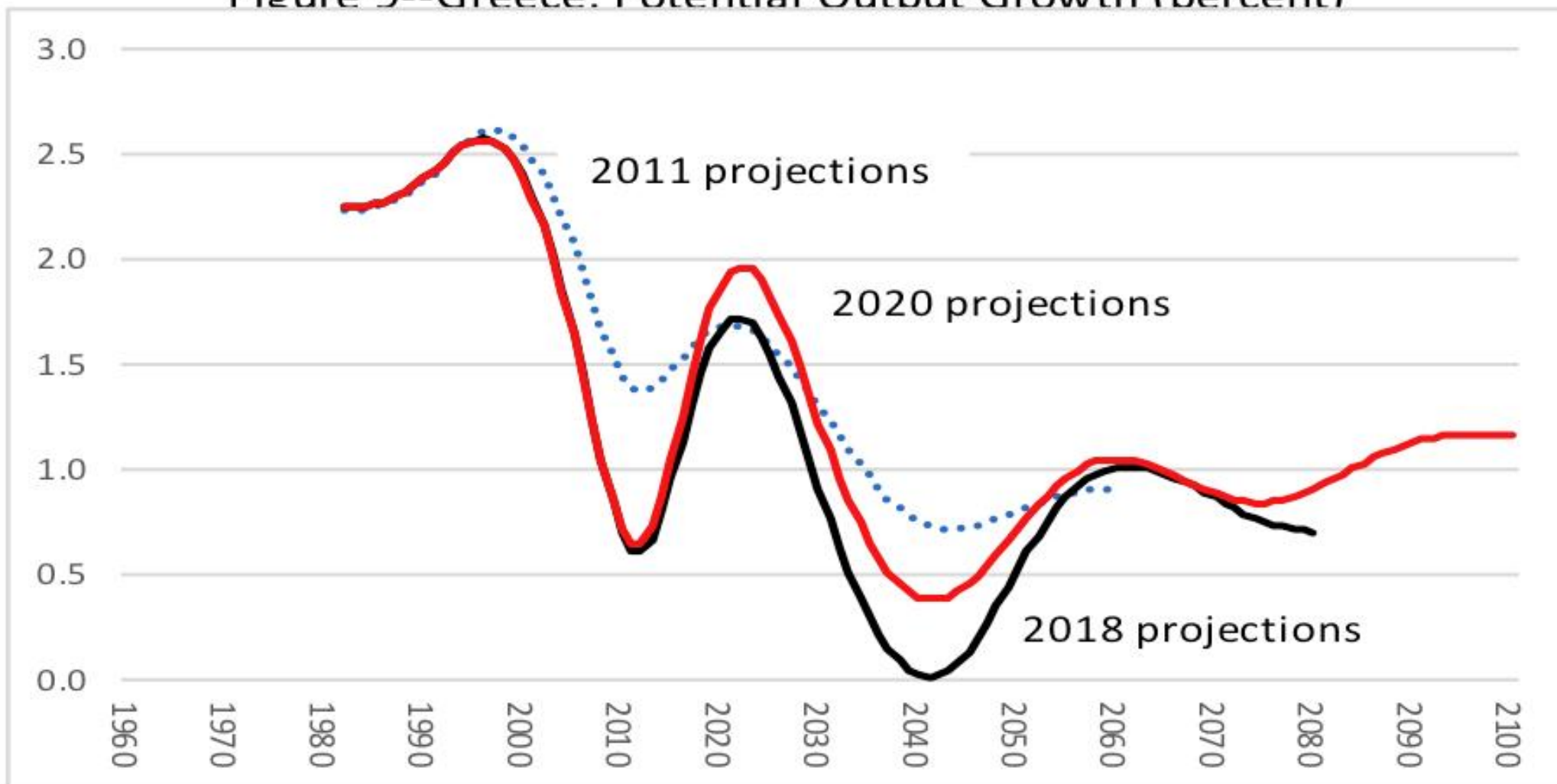


Fig 1 Labor Productivity Growth (Real GDP/Employed person; Q/(Q-4))

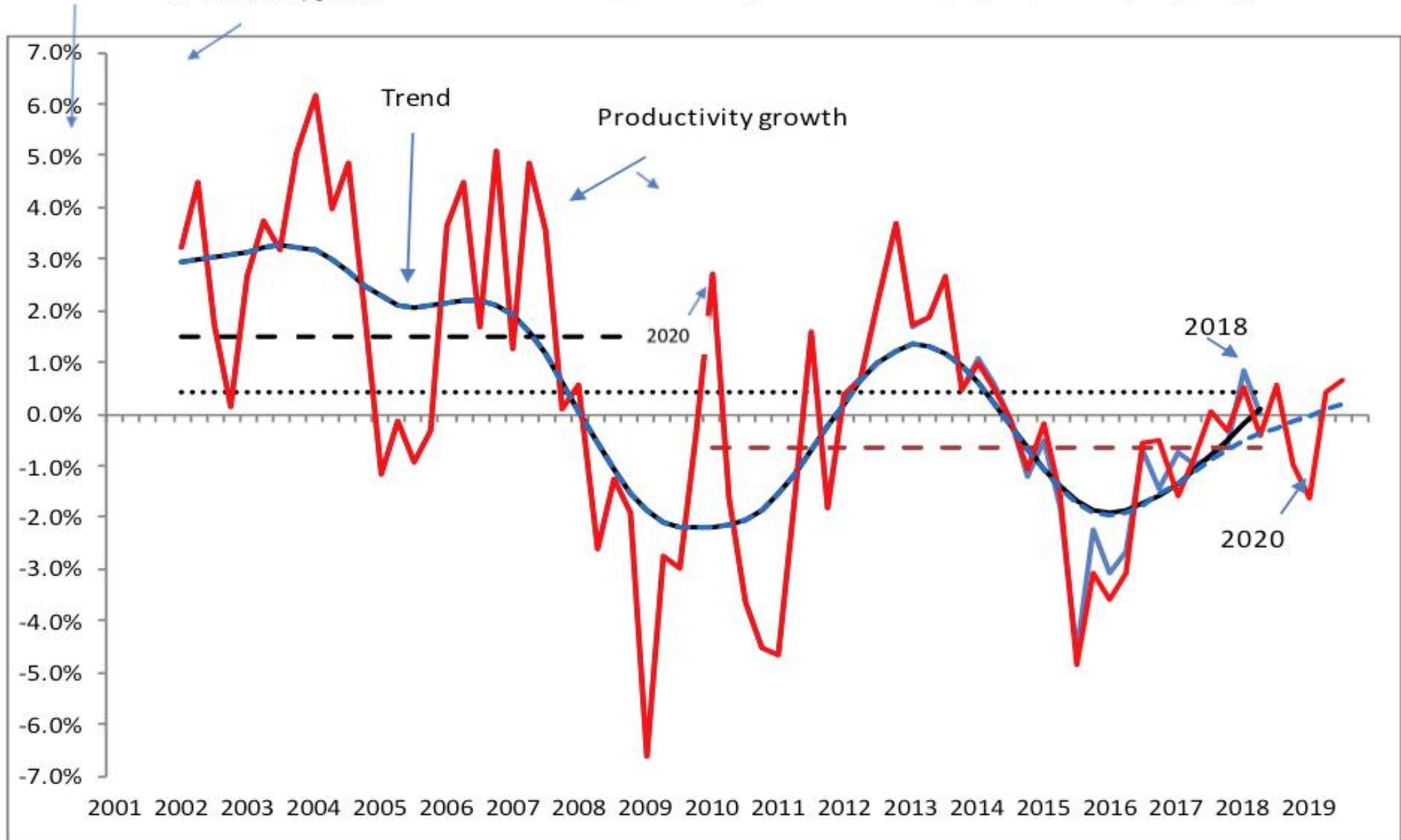


Figure 3. Greece--Index of Employment in the Public and Private Sectors

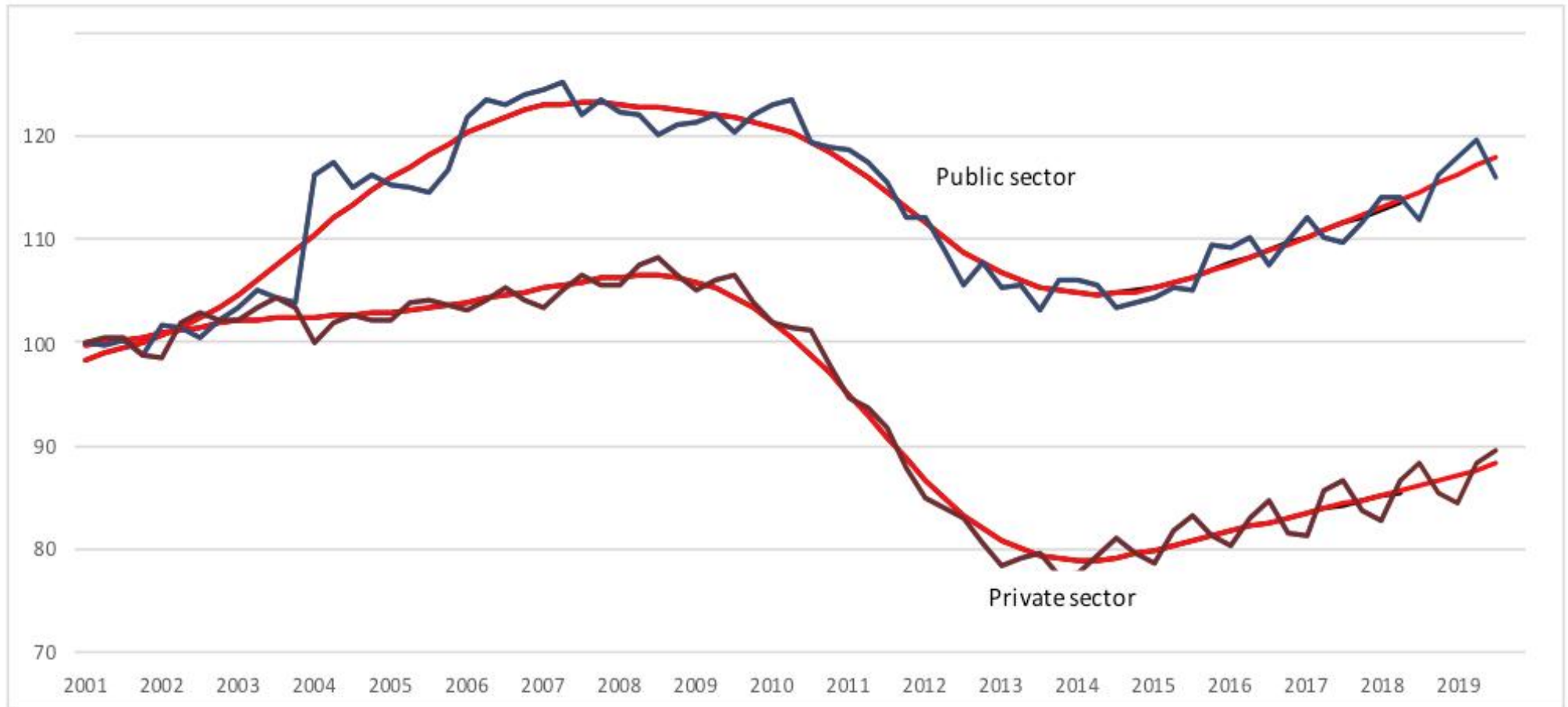


Figure 32. Greece: Spending Shares in Percent of Nominal GDP-Gross Fixed Investment

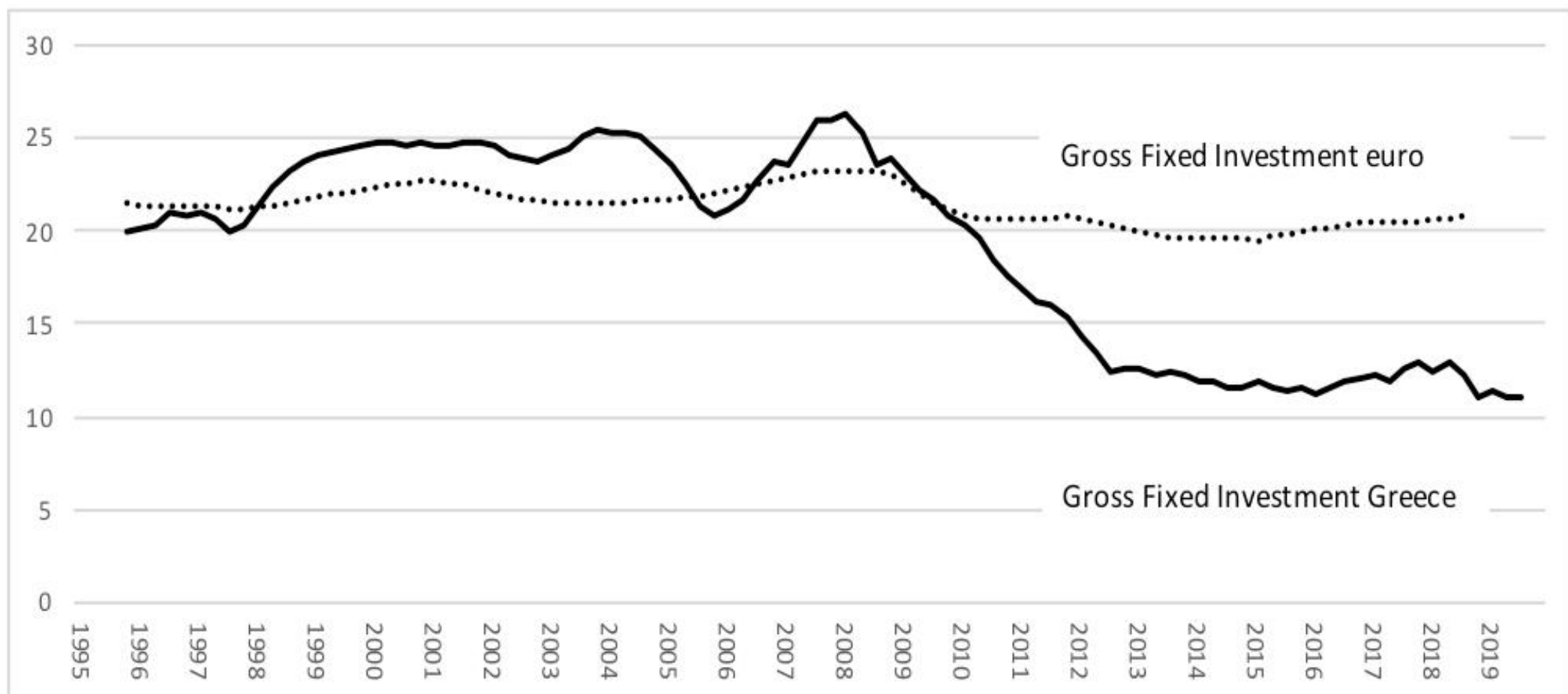


Table 7. Greece--Monitoring Dashboard of the Macroeconomy

	2015	2016	2017	2018				2019		Prel.	Prel.	Objective	Assessment
	Q1	Q1	Q1	Q1	Q2	Q3	Q4	Q1	Q2	Q3	Q4		
1 Gross debt (euros billions)	303.4	309.1	310.7	322.6	323.4	335.0	334.7	337.4	335.5			stable or falling	increasing
2 Gross debt (percent of GDP)	169.9	174.9	175.4	177.9	177.4	182.2	181.2	182.1	180.2			< 60 % GDP	too high no progress
3 Labor productivity growth (% y/y)	-0.2%	-3.6%	-1.6%	0.5%	-0.4%	0.6%	-1.0%	-1.6%	0.4%	0.6%		> 1.5%	Too low slow recovery
4 CPI inflation, harmonized (% y/y)	-2.2%	-0.2%	1.5%	0.3%	0.7%	0.9%	1.1%	0.8%	0.6%	0.2%	0.4%	Below euro zone	Good progress
Euro zone inflation (% y/y)	-0.3%	0.0%	1.8%	1.3%	1.7%	2.1%	1.9%	1.4%	1.4%	1.1%	1.1%		
Difference (% pts)	-1.9%	-0.3%	-0.2%	-1.0%	-1.0%	-1.1%	-0.8%	-0.6%	-0.8%	-0.9%	-0.7%		
5 Employment growth (% y/y)	0.6%	2.9%	1.5%	1.8%	1.8%	1.8%	2.6%	2.4%	2.5%	2.0%		> 1%	Good progress
6 Unemployment rate, s.a. (%)	25.9	24.1	22.6	20.4	19.5	18.9	18.5	18.4	17.3	16.9	16.6	< 7.5%	progress
7 Consumption share in GDP (%) 4Q MA	90.5	89.5	89.5	88.3	88.0	87.6	87.3	87.1	87.1	87.0		< 75%	too high slow progress
8 Export share in GDP (%) 4Q MA	32.7	30.0	30.7	33.2	34.2	34.9	35.8	36.1	36.2	36.8		> 60 %	too low slow progress
9 Fixed investment share in GDP (%) 4Q MA	11.9	11.3	12.2	12.5	13.0	12.2	11.1	11.3	11.1	11.1		> 20 %	too low no progress
10 External current account (% GDP) 4Q	-2.5%	-0.3%	-1.9%	-1.9%	-2.2%	-2.6%	-2.8%	-3.2%	-2.5%	-2.0%		> 0 %	too weak
11 Primary fiscal balance (% GDP) 4Q	-0.3%	-1.1%	4.2%	4.0%	4.0%	4.0%	4.3%	3.6%	3.7%	3.7%	3.7%	> 3.5%	Sound

Sources: Eurostat, ELSTAT, Bank of Greece.